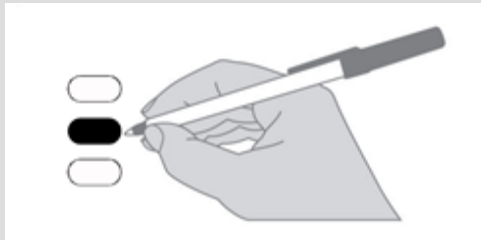


Instructions

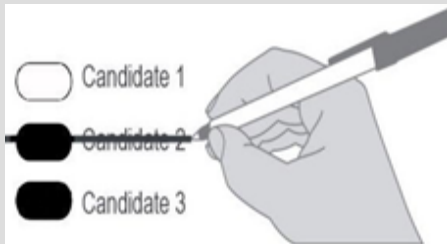
How to vote



Use a black ink pen to completely fill in the oval next to your choice.

Vote for one in each race. If you vote for more than one, no votes will be counted for that race.

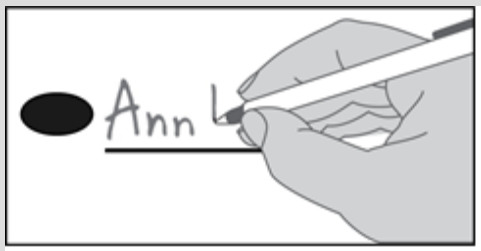
How to correct a mistake



To make a correction, draw a line through the entire choice.

You then have the option of making a different choice by completely filling in another oval.

Optional write-in



To add a new candidate, fill in the oval next to the write-in line and print the name on the write-in line.



Who donates to campaigns?

View contributors for candidates and measures

Public Disclosure Commission

www.pdc.wa.gov

Toll Free (877) 601-2828

Local Measures

**ONLY REGISTERED VOTERS IN
WASHOUGAL SCHOOL DISTRICT NO.
112-6
ARE ELIGIBLE TO VOTE ON THE
FOLLOWING**

Washougal School District No. 112-6
Proposition No. 14
Renewal Educational Programs and Operations Levy

The Board of Directors of Washougal School District No. 112-6 adopted Resolution No. 2025-26-02, concerning a renewal levy for educational programs and operations. This proposition would fund districtwide needs, including teachers, nurses, counselors, safety, athletics, visual and performing arts, instructional materials, field trips, student supports, maintenance and operations and authorize the District to levy the following excess taxes, renewing an expiring levy, on all taxable property within the District:

<u>Collection Year</u>	<u>Estimated Levy Rate/\$1,000 Assessed Value</u>	<u>Levy Amount</u>
2027	\$1.95	\$10,392,316
2028	\$1.95	\$10,805,811
2029	\$1.95	\$11,235,845

all as provided in Resolution No. 2025-26-02. Should this proposition be approved?

Levy...Yes

Levy...No

INTENTIONALLY LEFT BLANK

Local Measures

(continued)

**ONLY REGISTERED VOTERS IN
WASHOUGAL SCHOOL DISTRICT NO.
112-6
ARE ELIGIBLE TO VOTE ON THE
FOLLOWING**

Washougal School District No. 112-6
Proposition No. 15
Renewal Safety, Technology and Capital Improvements Levy

The Board of Directors of Washougal School District No. 112-6 adopted Resolution No. 2025-06-03, concerning a proposition to finance safety, educational technology, and capital improvements. This proposition would authorize the District to levy the following excess taxes, renewing an expiring levy, on all taxable property within the District, to acquire, install and support school security systems, educational technology equipment, and staffing, and replace/repair HVAC systems, parking lots, playgrounds, and school interiors:

<u>Collection Year</u>	<u>Estimated Levy Rate/\$1,000 Assessed Value</u>	<u>Levy Amount</u>
2027	\$0.62	\$3,304,224
2028	\$0.62	\$3,435,694
2029	\$0.62	\$3,572,423

all as provided in Resolution No. 2025-06-03. Should this proposition be approved?

Levy...Yes

Levy...No

INTENTIONALLY LEFT BLANK

Local Measures

(continued)

**ONLY REGISTERED VOTERS IN
SKAMANIA SCHOOL DISTRICT NO. 2
ARE ELIGIBLE TO VOTE ON THE
FOLLOWING**

Skamania School District No. 2

Proposition No. 1

Replacement of Expiring Educational Programs and
Operations Levy

The Board of Directors adopted Resolution # 11192025 concerning renewal of an expiring levy for educational programs and operations. This proposition provides funding for educational programs and operations not funded by the State. If approved, Proposition 1 would authorize the District to levy the following excess taxes upon all taxable property within the District, as provided in Resolution No. 11192025:

<u>Collection Years</u>	<u>Estimated Levy Rate/\$1,000 Assessed Value</u>	<u>Levy Amount</u>
2027	\$1.10	\$302,500
2028	\$1.11	\$325,000
2029	\$1.12	\$347,500

Should this proposition be approved?

YES

NO

INTENTIONALLY LEFT BLANK

Local Measures

(continued)

**ONLY REGISTERED VOTERS IN
STEVENSON-CARSON SCHOOL DISTRICT
NO. 303
ARE ELIGIBLE TO VOTE ON THE
FOLLOWING**

Stevenson-Carson School District No. 303

Proposition No. 1

Three-Year Replacement Enrichment Levy

Concerning a proposition to finance educational enrichment programs. This proposition would authorize the District to levy the following excess taxes upon all taxable property within the District, for support of the District's General Fund educational enrichment program expenses:

<u>Collection Years</u>	<u>Approximate Levy Rate/\$1,000 of Assessed Value</u>	<u>Levy Amount</u>
2027	\$1.34	\$2,700,000
2028	\$1.25	\$2,785,000
2029	\$1.18	\$2,885,000

Should this proposition be approved?

Levy.....Yes

Levy.....No

INTENTIONALLY LEFT BLANK

Local Measures

(continued)

**ONLY REGISTERED VOTERS IN
WHITE SALMON SCHOOL DISTRICT #
405-17
ARE ELIGIBLE TO VOTE ON THE
FOLLOWING**

White Salmon Valley School District No. 405-17
Proposition No. 1
Bonds to Replace and Renovate Aging School Buildings
and Improve Safety

The Board of Directors of White Salmon Valley School District No. 405-17 adopted Resolution No. 25/26-03, concerning bonds to provide safe, modern facilities for learning. This proposition would authorize the District to: reconfigure and modernize Columbia High School, retrofit and remodel Henkel Middle and Stevenson Intermediate Schools, and relocate Whitson Elementary School to create a unified K-12 campus (improving safety/security, expanding career/technical education, reducing reliance on portable classrooms, improving ADA accessibility, HVAC, plumbing, electrical); issue \$78,000,000 of general obligation bonds maturing within 20 years; and levy annual excess property taxes to repay the bonds, all as provided in Resolution No. 25/26-03.

Should this proposition be:

Approved

Rejected

INTENTIONALLY LEFT BLANK

Local Measures

(continued)

**ONLY REGISTERED VOTERS IN
WHITE SALMON SCHOOL DISTRICT #
405-17
ARE ELIGIBLE TO VOTE ON THE
FOLLOWING**

White Salmon Valley School District No. 405-17
Proposition No. 1
Renewal Educational Programs and Operations Levy

The Board of Directors of White Salmon Valley School District No. 405-17 adopted Resolution No. 25/26-04, concerning a proposition to finance educational programs and operations expenses. This proposition would authorize the District to levy the following excess taxes, renewing an expiring levy, on all taxable property within the District, for support of the District's educational programs and operations expenses not funded by the State of Washington:

<u>Collection Year</u>	<u>Estimated Levy Rate/\$1,000 Assessed Value</u>	<u>Levy Amount</u>
2027	\$1.61	\$4,238,760
2028	\$1.60	\$4,424,904
2029	\$1.59	\$4,616,600

all as provided in Resolution No. 25/26-04. Should this proposition be approved?

LEVY...YES

LEVY...NO

INTENTIONALLY LEFT BLANK